

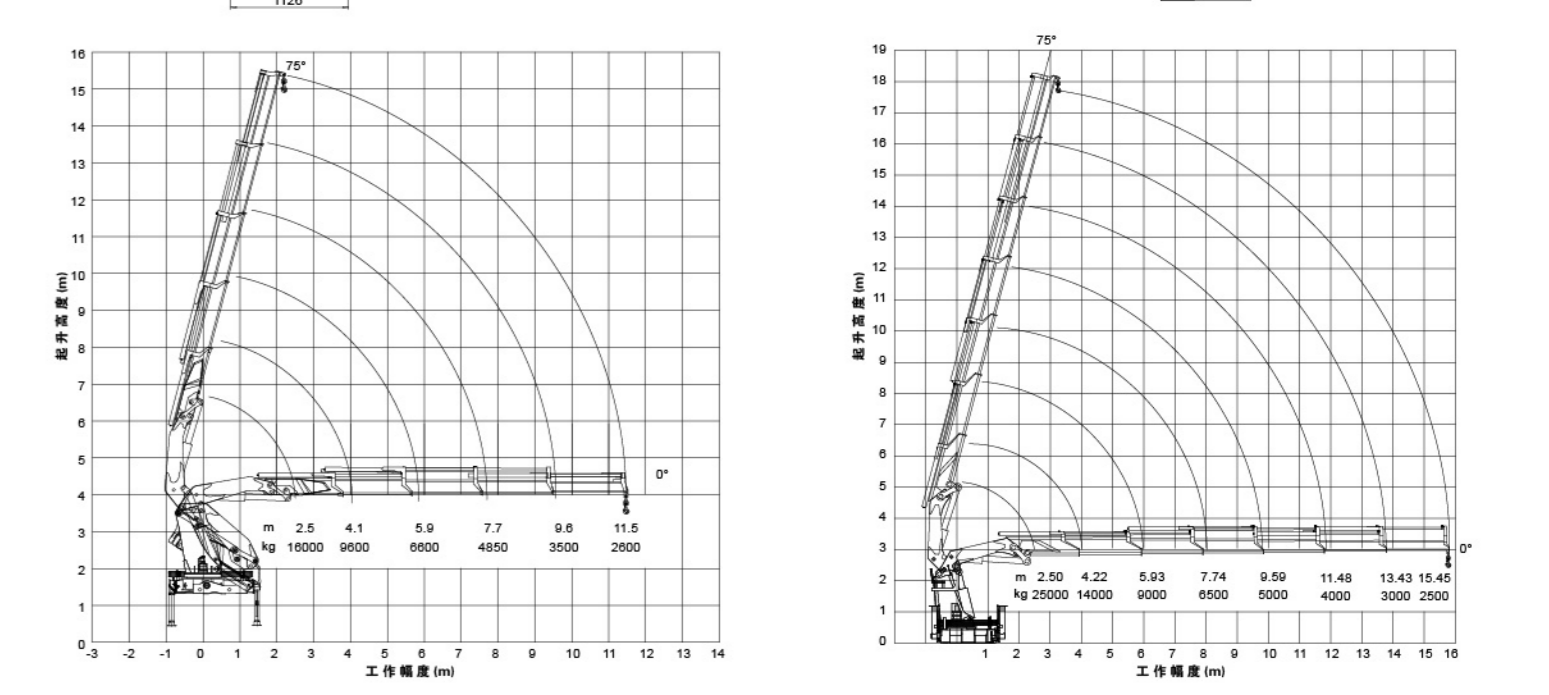
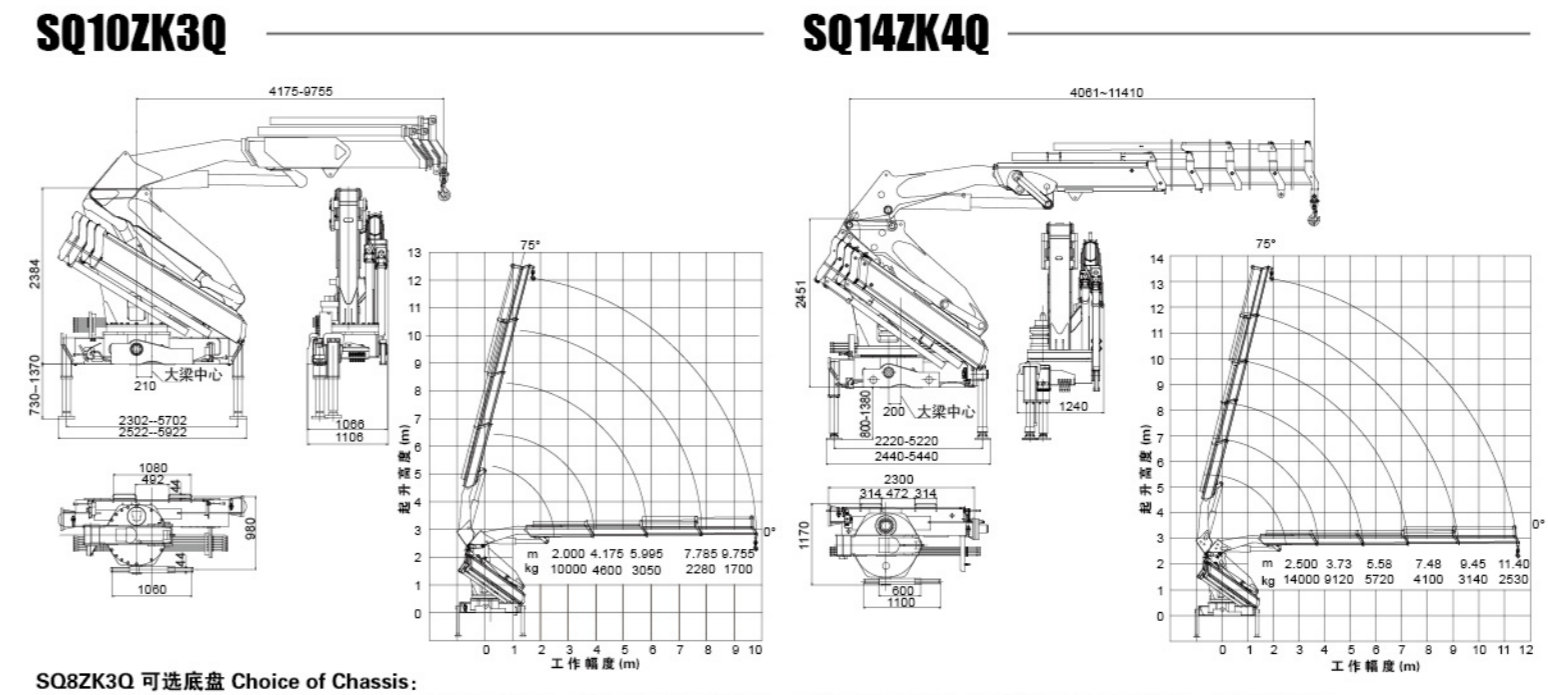
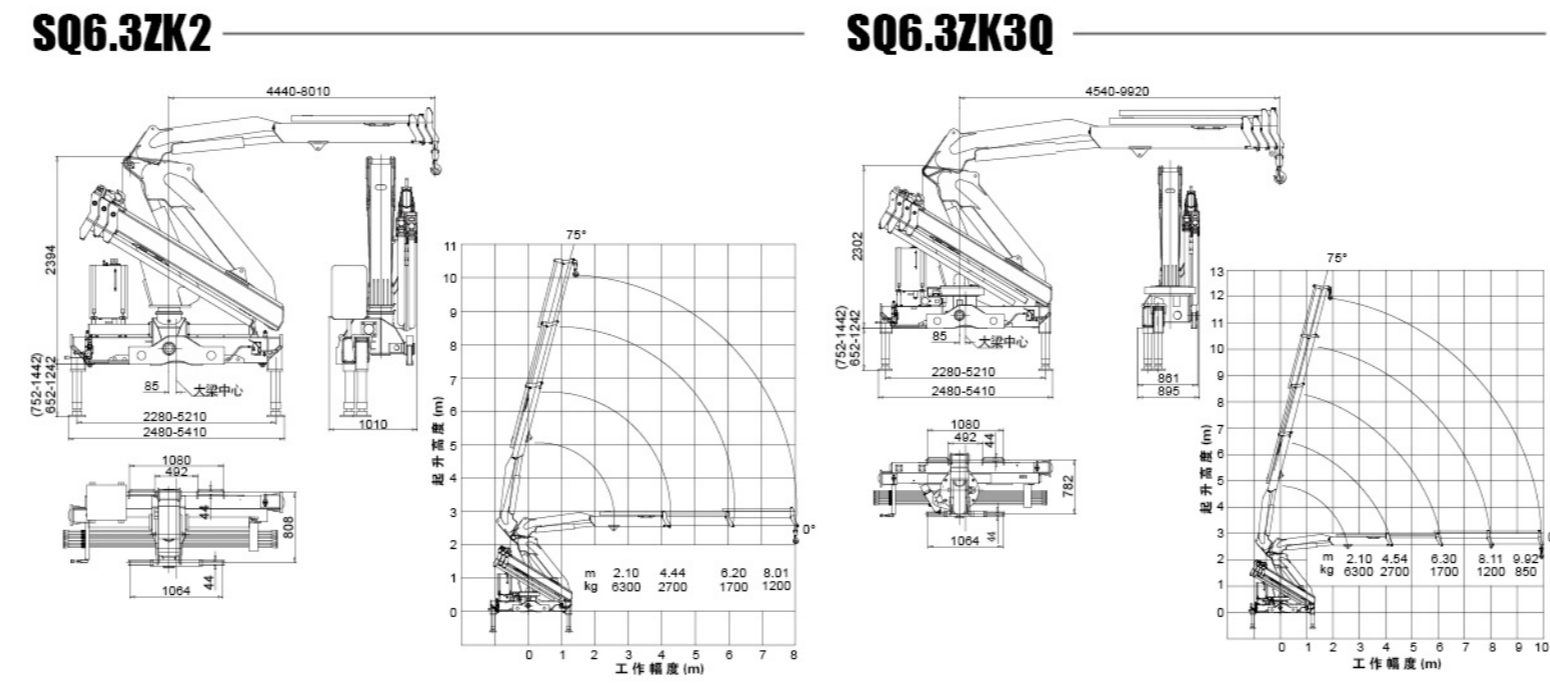
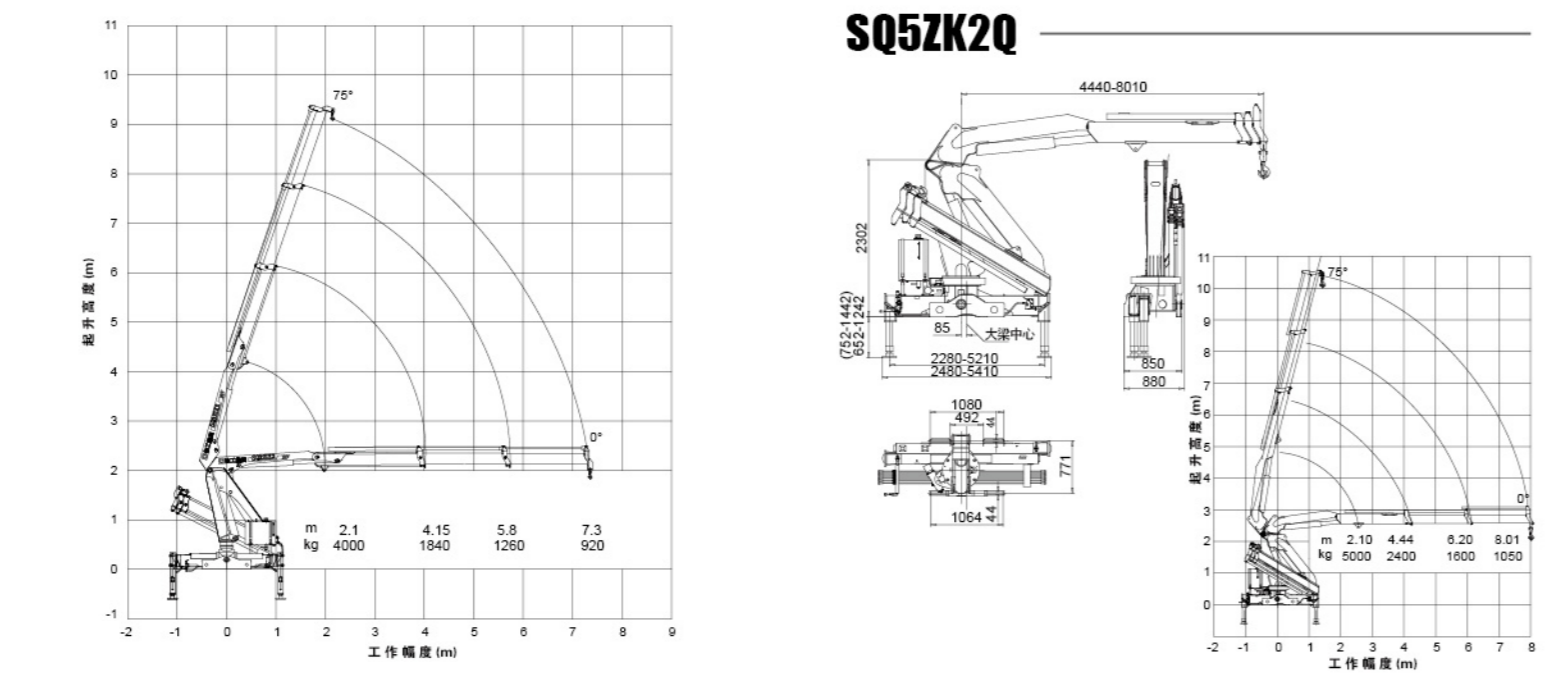
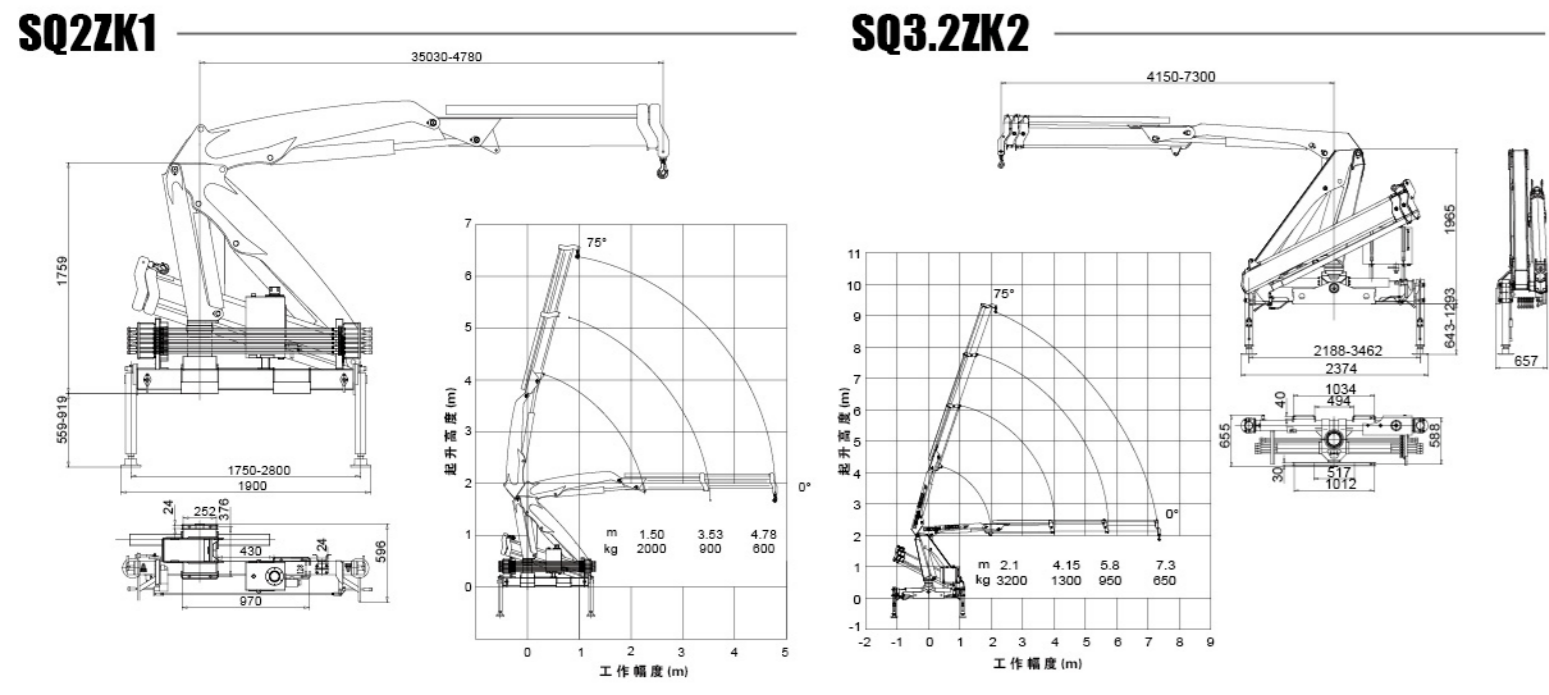
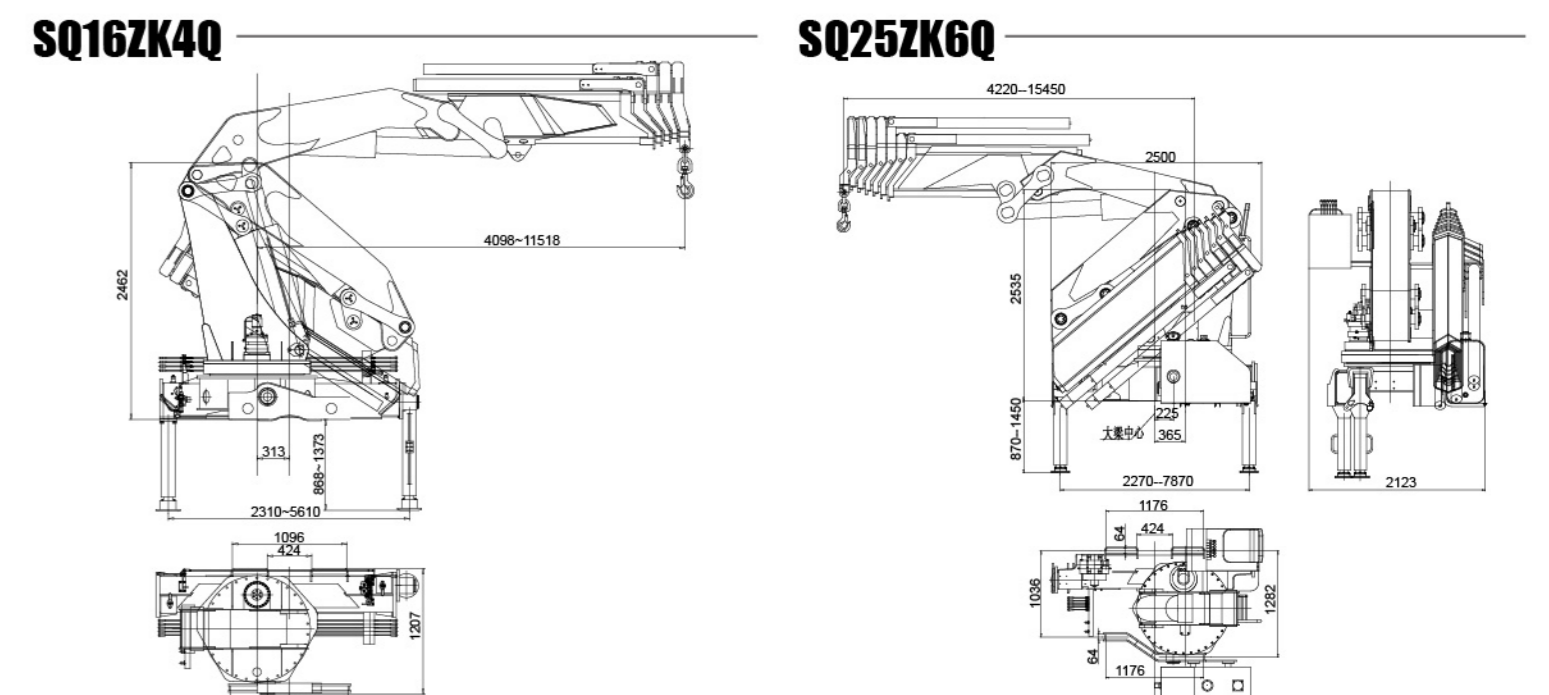
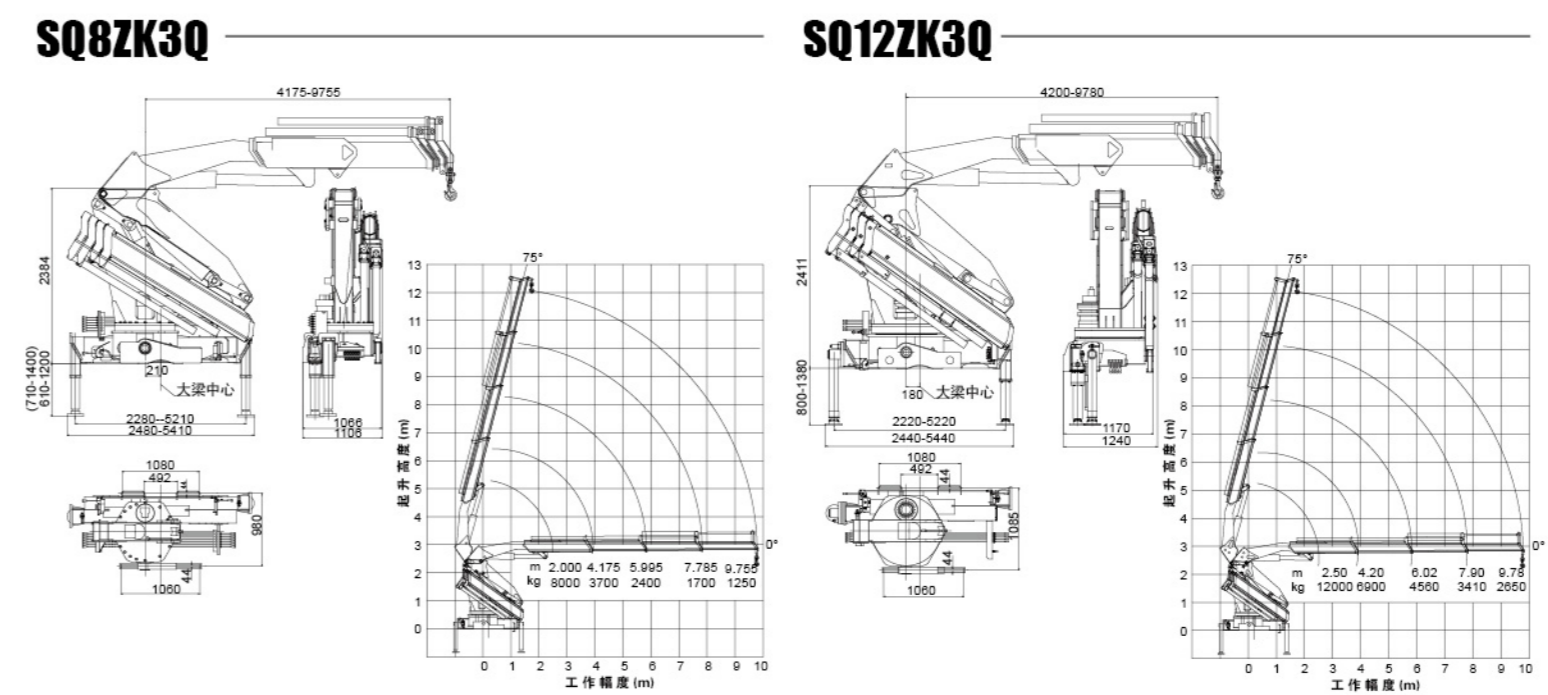
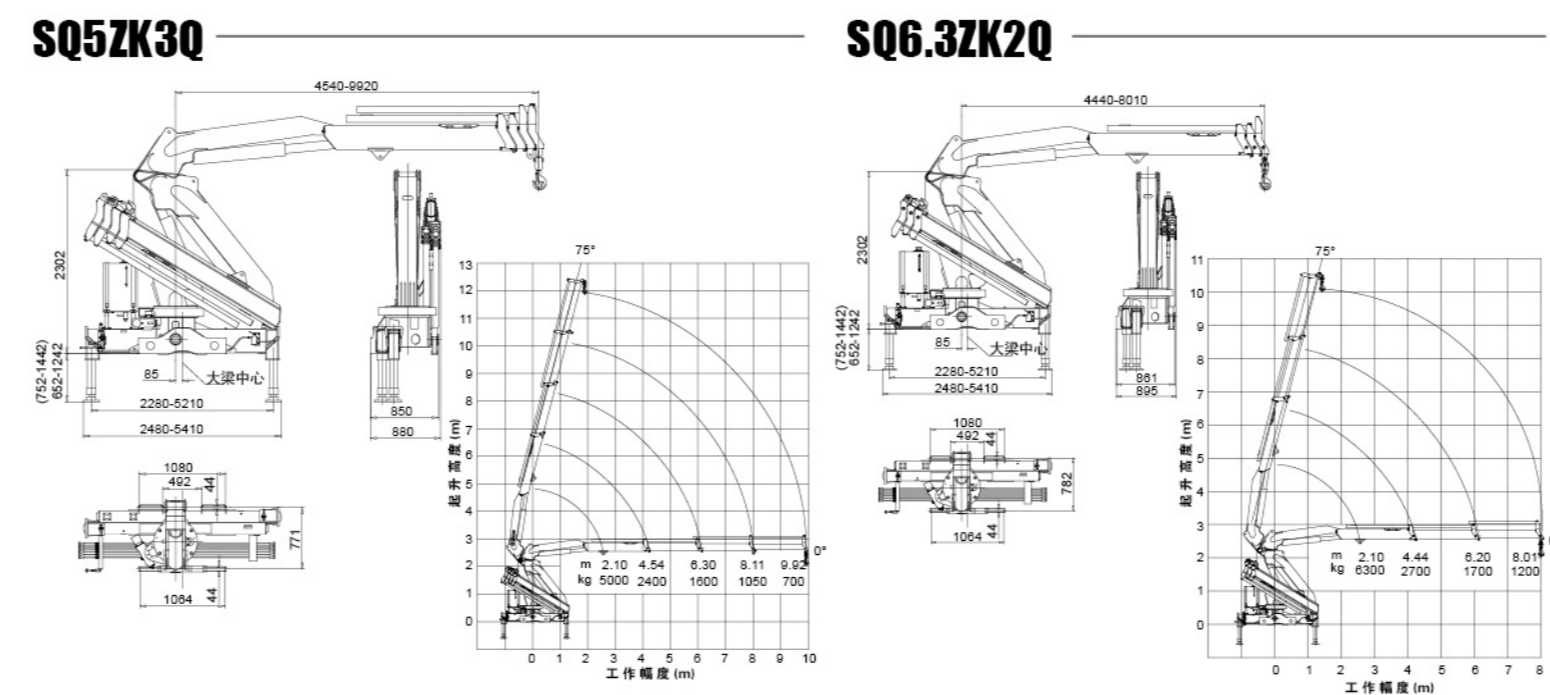
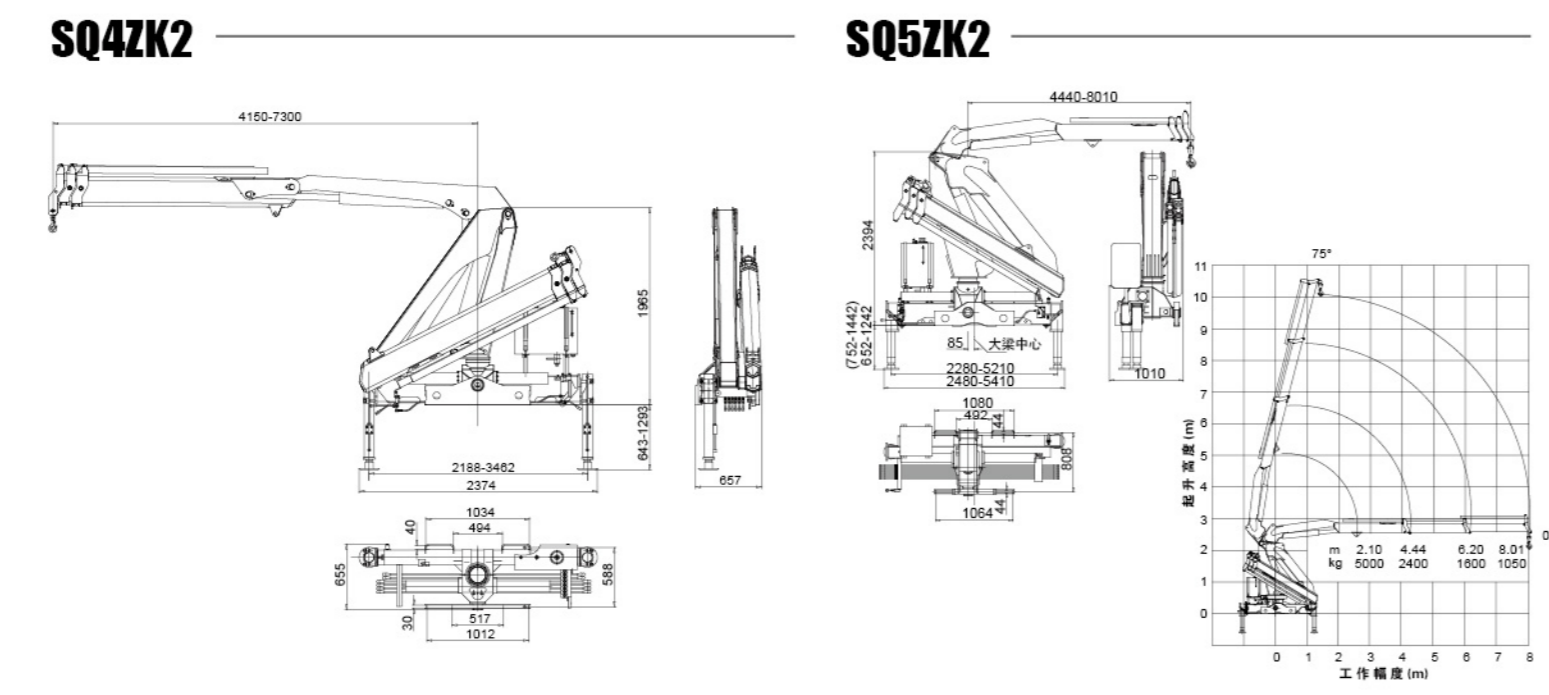
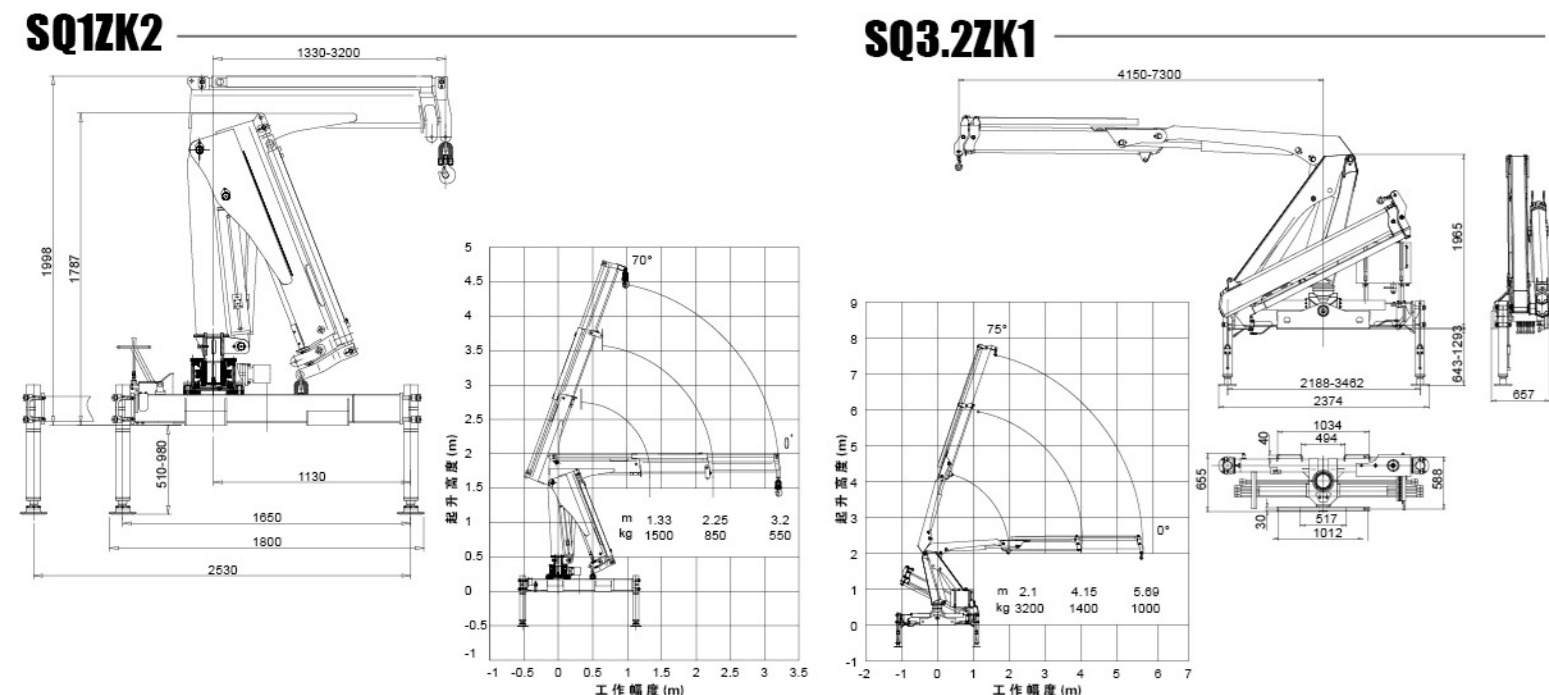
项目	Item	单位Unit	SQ1ZK2	SQ2ZK1	SQ3.2ZK1	SQ3.2ZK2
最大起升质量	Max Lifting Capacity	kg	1500	2000	3200	3200
最大起重力矩	Max Lifting Moment	T.M	2	3.2	6.72	6.72
推荐功率	Recommend Power	kw	7.5	9	14	14
液压系统最大流量	Max Oil Flow of Hydraulic System	L/min	15	20	25	25
液压系统额定压力	Max Pressure of Hydraulic System	MPa	18	20	22	22
油箱容积	Oil Tank Capacity	L	25	25	60	60
起重机自重	Crane Weight	kg	540	608	1100	1150
安装空间	Installation Space	mm	550	680	850	850
回转角度	Rotation Angle	°	320	370	370	370

项目	Item	单位Unit	SQ4ZK2	SQ5ZK2	SQ5ZK2Q
最大起升质量	Max Lifting Capacity	kg	4000	5000	5000
最大起重力矩	Max Lifting Moment	T.M	8.4	10.5	10.5
推荐功率	Recommend Power	kw	14	18	18
液压系统最大流量	Max Oil Flow of Hydraulic System	L/min	25	25	25
液压系统额定压力	Max Pressure of Hydraulic System	MPa	26	28	28
油箱容积	Oil Tank Capacity	L	60	90	90
起重机自重	Crane Weight	kg	1200	2035	2011
安装空间	Installation Space	mm	850	1100	1050
回转角度	Rotation Angle	°	370	360° 全回转 All Rotation	

项目	Item	单位Unit	SQ5ZK3Q	SQ6.3ZK2	SQ6.3ZK2Q	SQ6.3ZK3Q
最大起升质量	Max Lifting Capacity	kg	5000	6300	6300	6300
最大起重力矩	Max Lifting Moment	T.M	10.5	13.23	13.23	13.23
推荐功率	Recommend Power	kw	18	18	18	18
液压系统最大流量	Max Oil Flow of Hydraulic System	L/min	25	25	25	25
液压系统额定压力	Max Pressure of Hydraulic System	MPa	28	28	28	28
油箱容积	Oil Tank Capacity	L	90	90	90	90
起重机自重	Crane Weight	kg	2117	2152	2115	2226
安装空间	Installation Space	mm	1050	1050	1050	1050
回转角度	Rotation Angle	°		360° 全回转 All Rotation		

项目	Item	单位Unit	SQ8ZK3Q	SQ10ZK3Q	SQ12ZK3Q	SQ14ZK4Q
最大起升质量	Max Lifting Capacity	kg	8000	10000	12000	14000
最大起重力矩	Max Lifting Moment	T.M	16	20	30	35
推荐功率	Recommend Power	kw	28	28	32	32
液压系统最大流量	Max Oil Flow of Hydraulic System	L/min	40	40	55	63
液压系统额定压力	Max Pressure of Hydraulic System	MPa	28	30	30	31.5
油箱容积	Oil Tank Capacity	L	160	160	160	220
起重机自重	Crane Weight	kg	2970	3477	4130	4468
安装空间	Installation Space	mm	1150	1150	1400	1300
回转角度	Rotation Angle	°		360° 全回转 All Rotation		

项目	Item	单位Unit	SQ16ZK4Q	SQ25ZK6Q
最大起升质量	Max Lifting Capacity	kg	16000	25000
最大起重力矩	Max Lifting Moment	T.M	40	62.5
推荐功率	Recommend Power	kw	37	50
液压系统最大流量	Max Oil Flow of Hydraulic System	L/min	63	80
液压系统额定压力	Max Pressure of Hydraulic System	MPa	31.5	31.5
油箱容积	Oil Tank Capacity	L	250	300
起重机自重	Crane Weight	kg	5000	7945
安装空间	Installation Space	mm	1500	2500
回转角度	Rotation Angle	°	360° 全回转 All Rotation	



**SQ1ZK2 可选底盘 Choice of Chassis:**  
HFC1065KR7; NKR77PLLWCJAY; EQ1060TJ20D3

**SQ2ZK1 可选底盘 Choice of Chassis:**  
JX1050TG823; JX1060TG823; EQ1060GJ20D3; NKR77PLLWCJAY; EQ1092FJ1

**SQ3.2ZK1/SQ3.2ZK2 可选底盘 Choice of Chassis:**  
NKR77PLLWCJAY; EQ1092FJ1; EQ1092F3GJ1; EQ1081GJ12D5; HFC1083K103R1D; DFL1120B; EQ5121GFJ

\* 未特别说明的底盘, 吊机为前置安装

**SQ4ZK2 可选底盘 Choice of Chassis:**  
EQ1092FJ1; EQ1092F3GJ1; EQ1081GJ12D5; DFL1120B; LZ1120LAPT; HFC1132KR1K3; EQ5121GFJ; EQ1110GLJ3; EQ1120GLJ; EQ1168TLJ; BJ1161VJPFK-S; BJ1122V4PBB-A1; BJ1158VKPFK-2

**SQ5ZK2 可选底盘 Choice of Chassis:**  
LZ1120LAPT; HFC1132KR1K3; CA1140PK2L3EA80; EQ1126KJ1; EQ1141NBJ2; DFL1140B; NXG1160D3ZAL1X; EQ5121GFJ; EQ5201GFJ6(前/后置); DFL1250A9(后置); HN1310P29D6M3J(后置); EQ1110GLJ3; EQ1160GJ12D7; EQ1120GLJ; EQ1168TLJ; BJ1161VJPFK-S; BJ1122V4PBB-A1; SX1166GP3F; BJ1158VKPFK-2

\* 未特别说明的底盘, 吊机为前置安装

**SQ5ZK3Q 可选底盘 Choice of Chassis:**  
LZ1120LAPT; HFC1132KR1K3; CA1140PK2L3EA80; EQ1126KJ1; EQ1141NBJ2; DFL1140B; NXG1160D3ZAL1X; EQ5121GFJ; EQ5201GFJ6(前/后置); DFL1250A9(后置); HN1310P29D6M3J(后置); EQ1110GLJ3; EQ1160GJ12D7; EQ1120GLJ; EQ1168TLJ; BJ1161VJPFK-S; BJ1122V4PBB-A1; SX1166GP3F; BJ1158VKPFK-2

**SQ6.3ZK2/SQ6.3ZK2Q/SQ6.3ZK3Q 可选底盘 Choice of Chassis:**  
CA1140PK2L3EA80; CA1163P7K2L3E; EQ1126KJ1; EQ1141NBJ2; DFL1140B; NXG1160D3ZAL1X; EQ5161GFJ7; LZ1160LCMT; CA1170PK2L7T3EA80; CA1176PK2L9T3A95; HFC1202KR1K3; BJ5317ZNPJJ-S; EQ5201GFJ6(前/后置); DFL1250A9(后置); HN1310P29D6M3J(后置); BJ1317VNPJJ-S(后置); DFL1250A9; DFL1160BX; EQ1160GJ12D7; BJ5163SCD; EQ1168GLJ2; NXG1252D3AZBLX; EQ1160GSZ3GJ; SX1166GP3F

\* 未特别说明的底盘, 吊机为前置安装

**SQ8ZK3Q 可选底盘 Choice of Chassis:**  
EQ5161GFJ7; LZ1160LCMT; CA1170PK2L7T3EA80; CA1176PK2L9T3A95; HFC1202KR1K3; CA1200PK2L7T3EA80; EQ1252GFJ; CA1253P7K2L11T1E; CA1240PK2L7T4EA81; EQ5201GFJ6; BJ5317ZNPJJ-S; ND1255B50J(后置); DFL1250A9; DFL1160BX; BJ5163SCD; EQ1208KB3GJ1; EQ1168GLJ2; NXG1252D3AZBLX; EQ1160GSZ3GJ

**SQ10ZK3Q 可选底盘 Choice of Chassis:**  
CA1200PK2L7T3EA80; EQ1252GFJ; BJ5253ZKJ; DFL1253AX; DFL1250A9; CA1253P7K2L11T1E; BJ1317VNPJJ-S; EQ5201GFJ6; CA1240PK2L7T4EA81; ZZ1257M5847C; ZZ1251M5841C; LZ1250PDTT; EQ1208KB3GJ1; NXG1252D3AZBL1X; CA1250P28K2L1E3; BJ5317ZNPJJ-S

**SQ12ZK3Q 可选底盘 Choice of Chassis:**  
BJ5253ZKJ; DFL1253AX; DFL1250A9; DFL1311A3; BJ1317VNPJJ-S; ZZ1257M5847C; ZZ1251M5841C; LZ1250PDTT; NXG1252D3AZBL1X; CA1250P28K2L1E3; CA1319PK2L7T4EA80; BJ5317ZNPJJ-S

**SQ14ZK4Q 可选底盘 Choice of Chassis:**  
BJ1317VNPJJ-S(前/后置); SX1315JN456; NXG1317D3ZDL1; CA1313P7K2L11T4A3E; BJ5317ZNPJJ-S; \* 未特别说明的底盘, 吊机为前置安装

**SQ16ZK4Q/SQ25ZK6Q 可选底盘 Choice of Chassis:**  
DFL1311A3; BJ1317VNPJJ-S(前/后置); SX1315JN456; NXG1317D3ZDL1; CA1313P7K2L11T4A3E; BJ5317ZNPJJ-S; NXG1310D3ZEX(前/后置)

\* 未特别说明的底盘, 吊机为前置安装